



ZOOM Guitar Lab

Reference guide

© 2016 ZOOM CORPORATION

Copying or reprinting this manual in part or in whole without
permission is prohibited.

Introduction

ZOOM Guitar Lab is an application that is compatible with ZOOM effect products. Using this app, you can add and remove effects as well as manage patches from a computer.

Installing and launching **ZOOM Guitar Lab**

1. Download **ZOOM Guitar Lab** to the computer

Download the application from the ZOOM website
(<http://www.zoom.co.jp/downloads/>).

HINT

- Download the latest **ZOOM Guitar Lab** from the above website.
- Download **ZOOM Guitar Lab** for the operating system that you are using.

2. Install **ZOOM Guitar Lab** on the computer

Follow the instructions that appear on screen to install **ZOOM Guitar Lab**.

3. Start **ZOOM Guitar Lab**



Click the **ZOOM Guitar Lab** icon and launch the application.

4. Select the effects product

Use a USB cable to connect the computer and a ZOOM effects product supported by **ZOOM Guitar Lab**.

Screen overview (EFFECT)

The screenshot shows the ZOOM Guitar Lab EFFECT screen. At the top, there's a header bar with 'Control', 'Help (H)', 'G5n Multi-Effects Processor', 'Used Memory Ratio: 38%', 'EFFECT', and 'PATCH' buttons. Below this is a table of effects and an 'Effect Pool' sidebar on the right.

Annotations:

- Managing versions / Showing the manual / Showing license information P.15 — P.16:** Points to the 'Help (H)' button.
- Checking the amount of device memory used P.6:** Points to the 'Used Memory Ratio: 38%' indicator.
- Opening the EFFECT screen P.5:** Points to the 'EFFECT' button.
- Sorting effects P.8:** Points to the 'Category' dropdown menu.
- Loading new effects on the device P.6:** Points to the 'Load to device' button at the bottom of the Effect Pool.
- Deleting and loading effects on the device / Viewing effect properties P.7:** Points to the star icon in the 'Use' column of the effects table.
- Selecting favorite effects P.8:** Points to the star icon in the 'Use' column of the effects table.

Effects Table:

Category	Effect	Comment	Use	Star
DYNAMICS	Comp	This compressor in the style of the MXR Dyna Comp.	17	
DYNAMICS	RackComp	This compressor allows more detailed adjustment than Comp.	12	
DYNAMICS	SlowATTCK	This effect slows the attack of each note, resulting in a violin-like performance.	3	★
DYNAMICS	ZNR	ZOOM's unique noise reduction cuts noise during pauses in playing without affecting the tone.	35	★
DYNAMICS	MuteSW	This effect allows you to mute the volume using the foot switch.	0	★
FILTER	AutoWah	This effect varies wah in accordance with picking intensity.	5	★
FILTER	Resonance	This effect varies the resonance filter frequency according to picking intensity.	4	★
FILTER	Cry	This effect varies the sound like a talking modulator.	0	★
FILTER	SeqFLTR	The sequence filter has the flavor of a Z.Vex Seek-Wah.	5	★
FILTER	Gt GEQ	This mono graphic equalizer has 6 bands that suit guitar frequencies.	1	★
FILTER	Gt GEQ 7	This mono graphic equalizer has 7 bands that suit guitar frequencies.	6	★
FILTER	St Gt GEQ	This stereo graphic equalizer has 6 bands that suit guitar frequencies.	2	★
FILTER	ParaEQ	This is a 1-band parametric equalizer.	4	★

Effect Pool:

- ▶ DYNAMICS
- ▶ FILTER
- ▶ DRIVE
- ▶ AMP
- ▶ CABINET
- ▶ MODULATION
- ▶ SFX
- ▶ DELAY
- ▶ REVERB
- ▶ PEDAL

Buttons: 'Load to device' at the bottom of the Effect Pool.

Screen overview (PATCH)

Undoing the last change to a patch P.12

Managing versions / Showing the manual / Showing license information P.15 — P.16

Opening the PATCH screen P.9

Patch#	Patch Name	Comment
1	Lead BGN	This modern lead sound uses XtasyBlue and ModDelay.
2	Phazed	This is an MS 800 drive sound with a phaser effect.
3	UFO	Using ParaEQ, the midrange is emphasized in this sound in the style of Michael Schenker.
4	DreamWorld	This crunch sound has TapeEcho and Hall reverb added to SweetDrv.
5	The Brown	MS 800 is used to emulate Eddie Van Halen's brown sound.
6	Funk Sauce	This funk rhythm tone adds Air to AutoWah and Phaser effects.
7	Hard Rock	This drive sound that uses XtasyBlue and Hall is good for hard rock.
8	GrungeFuzz	The distortion of TB MK1.5 is added to XtasyBlue for this grunge fuzz sound.
9	MS.Mudd	D Spring reverb is added to a powerful drive sound made using MS 800.
10	OctaveSolo	This lead tone combines Octave with MS 800 and TS Drive effects.
11	HeavenSent	ReverseDL and Plate are used create this mystical sound.
12	SL-Drive	XtasyBlue and two Delays are combined to create a long sound with a Steve Lukather feel.

Editing patch names P.11

Editing patch comments P.12

Checking patch sounds / Changing patch order / Showing patch properties P.10

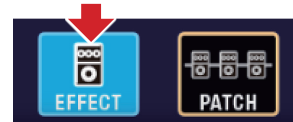
Backing up patches on the device / Restoring patches to the device P.13 — P.14

Opening the EFFECT screen

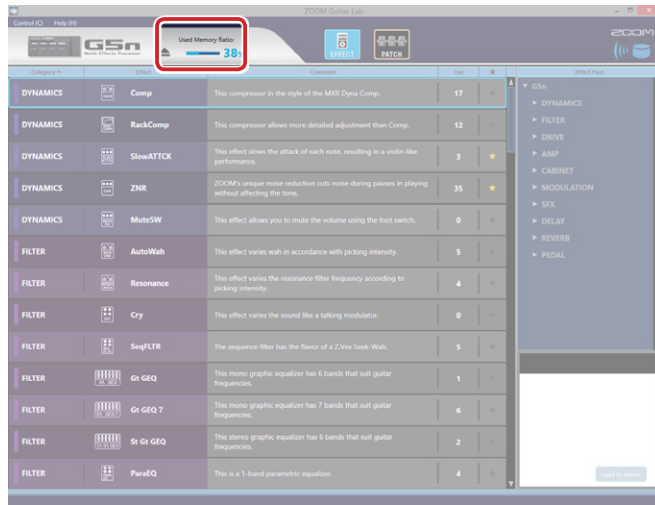


Click the EFFECT icon.

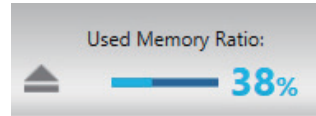
Click



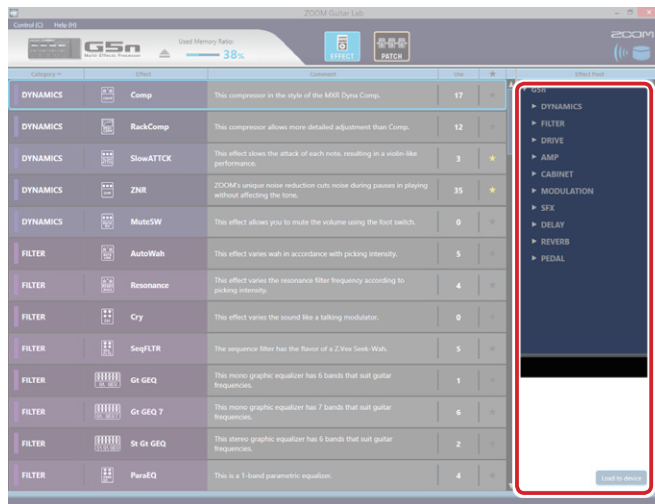
Checking the amount of device memory used



You can check the amount of memory used on the device.



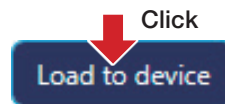
Loading new effects on the device



1. Click the new effect to add.



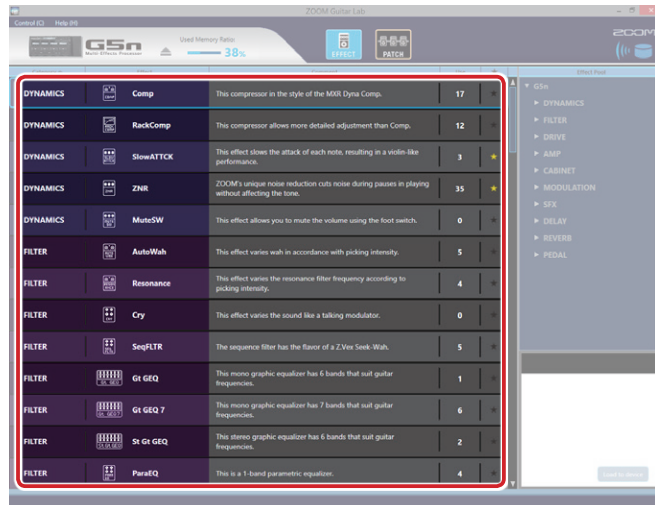
2. Select "Load to device".



HINT

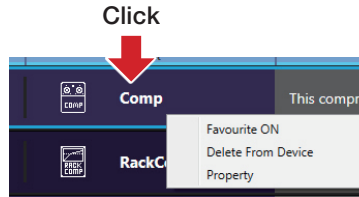
NEW appears by folders that contain new effects.

Deleting and loading effects on the device / Viewing effect properties

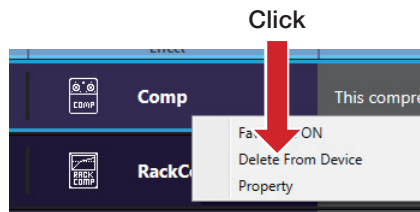


Deleting effects from the device

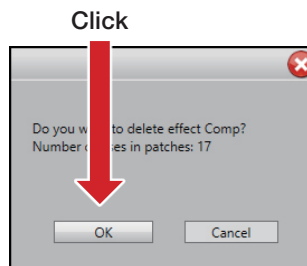
1. Right-click the effect to delete.



2. Select "Delete From Device".



3. Click "OK".



Loading effects on the device

Click the load icon for the effect to load.

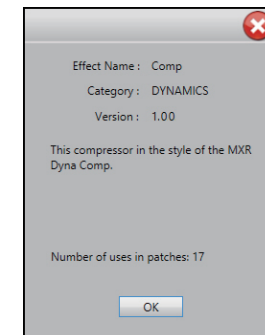


HINT

The load icon will appear for effects that had been loaded after they are removed.

Viewing effect properties

Double-click an effect to view its properties.

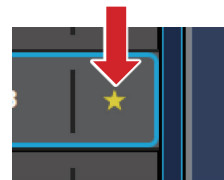


Selecting favorite effects

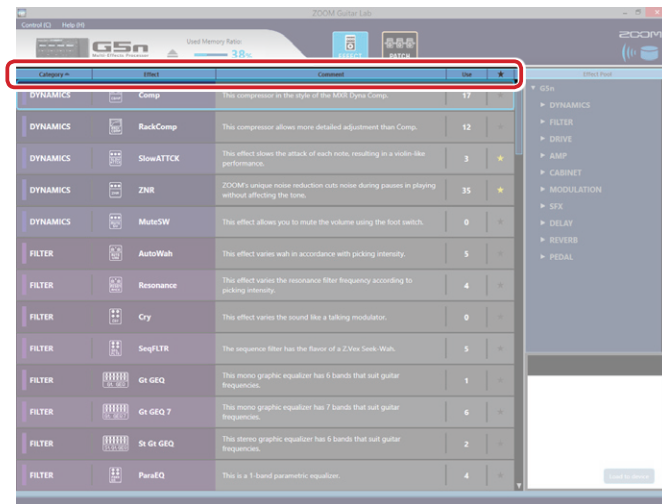


Click the ★ to select an effect as a favorite.

Click

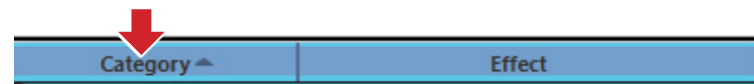


Sorting effects



Select the order in which effects are sorted.

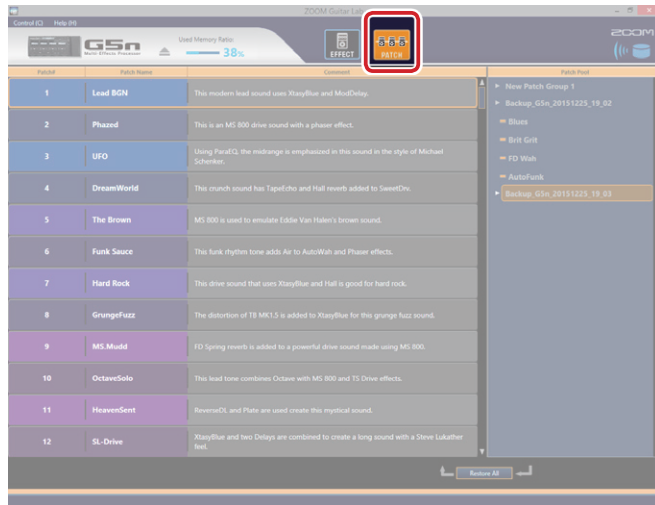
Click



■ Sort condition types

Category	Sort in category order.
Effect	Sort in alphabetical order.
Use	Show by the number of times used in patches on the device.
★	Sort with favorites first.

Opening the PATCH screen



Click the PATCH icon.

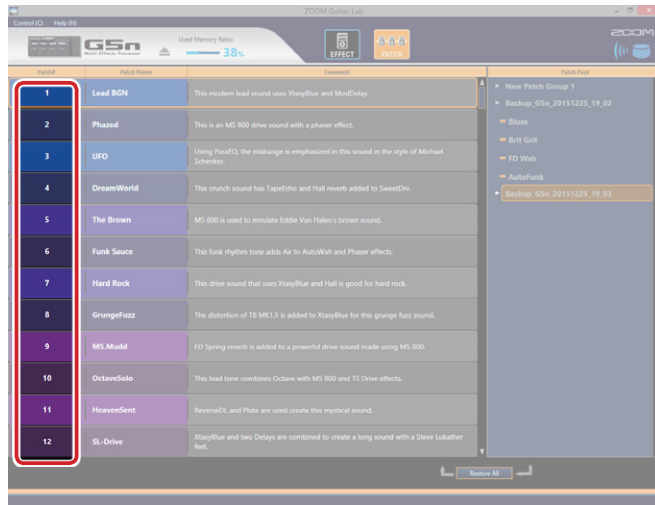


HINT



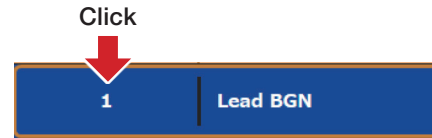
appears next to patches that use effects that are not loaded on the device.

Checking patch sounds / Changing patch order / Showing patch properties



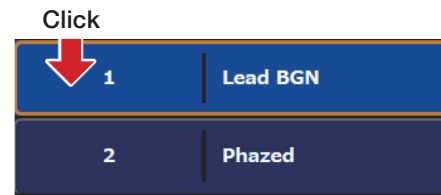
Checking patch sounds

Select a patch to check its sound.

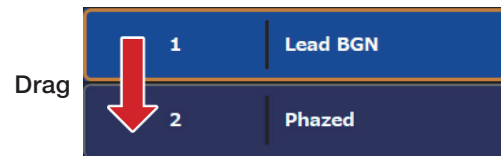


Changing the patch order

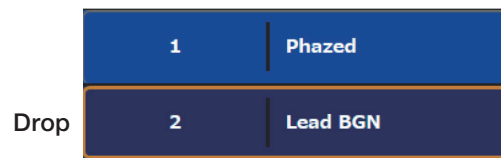
1. Select the patch to reorder.



2. Drag that patch to the position you want.

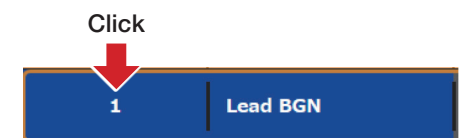


3. Drop the reordered patch.

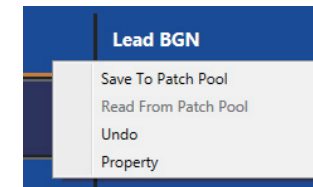


Showing patch properties

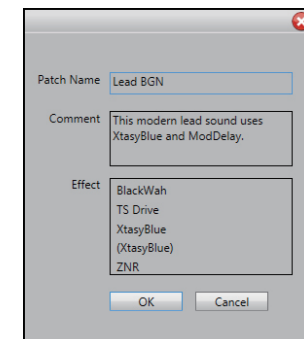
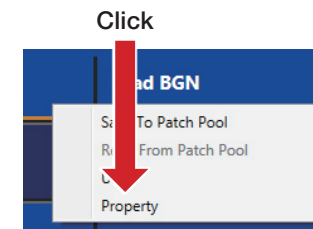
1. Select the patch to view.



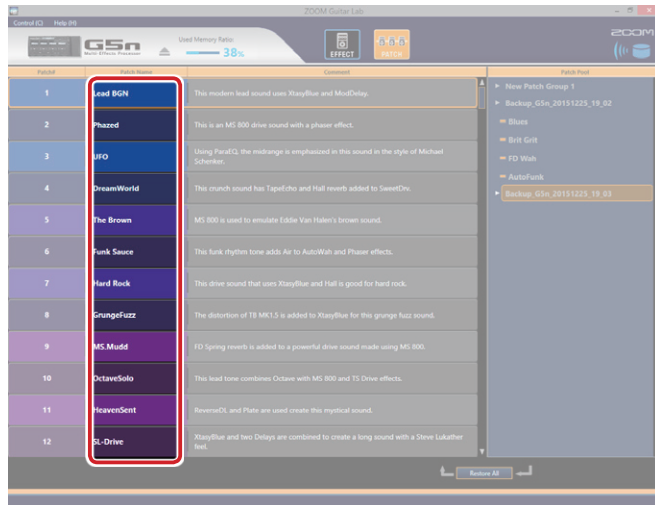
2. Right-click it.



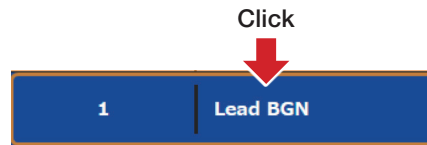
3. Select "Property" to open the properties window.



Editing patch names



1. Double-click the patch name to edit.



2. Edit the patch name.

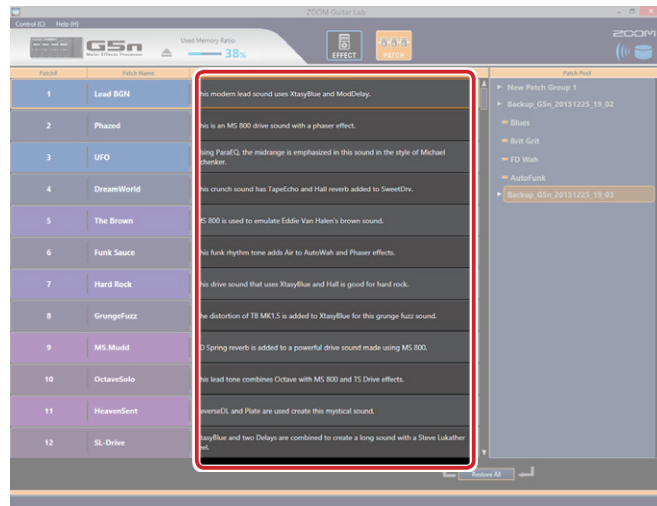


NOTE

- The characters and symbols that can be used are as follows.
! # \$ % & ' () +, -, . ; = @ [] ^ _ ` { } ~ (space) A-Z, a-z, 0-9
- Patch names can have a maximum of 10 characters.

Editing patch comments

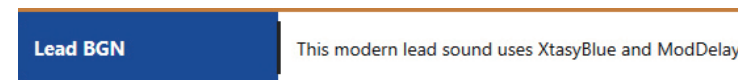
You can manage patches that you have created by using **zoom Guitar Lab** to enter comments for them.



1. Double-click the comment to edit.



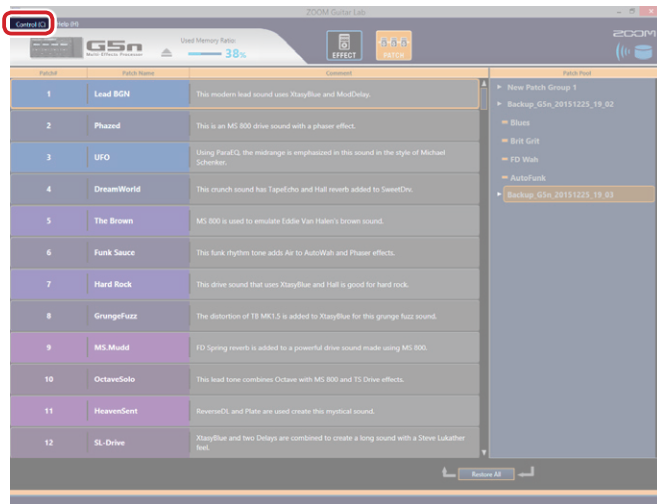
2. Edit the comment.



NOTE

A comment can have a maximum of 200 characters.

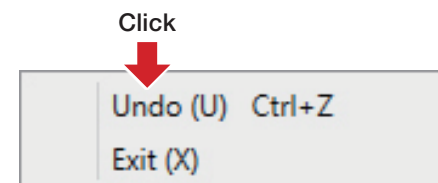
Undoing the last change to a patch



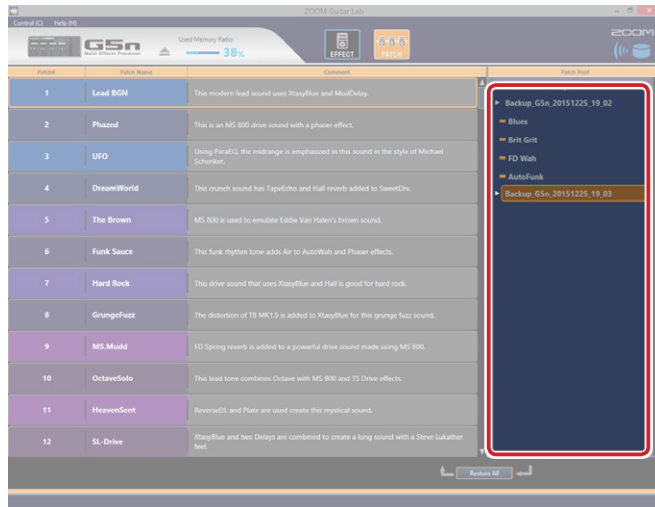
1. Click "Control".



2. Select "Undo".

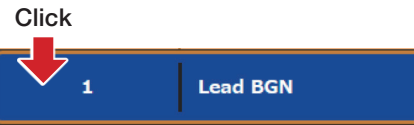


Backing up patches on the device

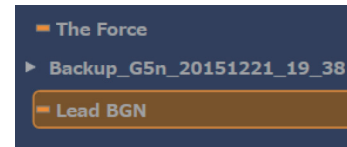
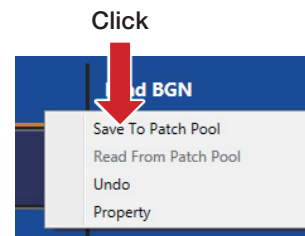


Backing up individual patches

1. Right-click a patch to back up.

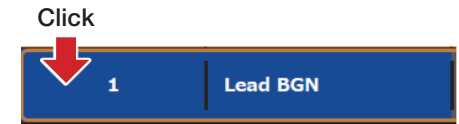


2. Select "Save To Patch Pool" to back up the patch.



Backing up all patches

1. Select a patch on the device.



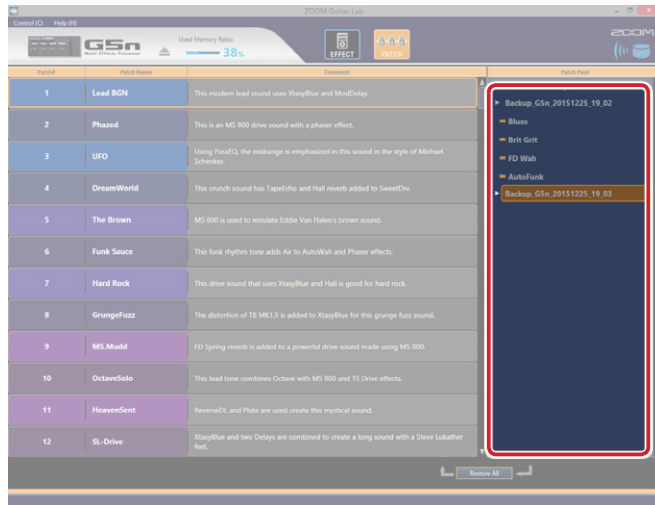
2. Select "Backup All".



HINT

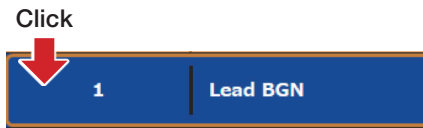
- Select multiple patches to back up by holding down the Ctrl key as you click them.
- Export patches by dragging and dropping them outside the application window.
- Import patches by dragging and dropping their files into the application window.

Restoring patches to the device

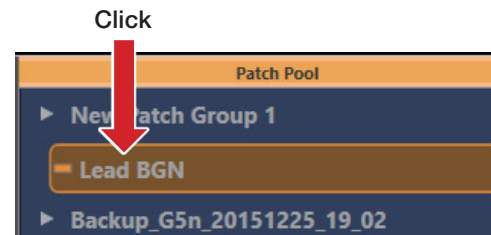


Restoring individual patches

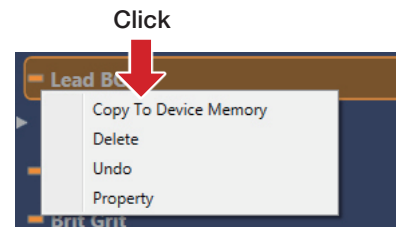
1. Select where to restore the patch.



2. Right-click the patch to restore.

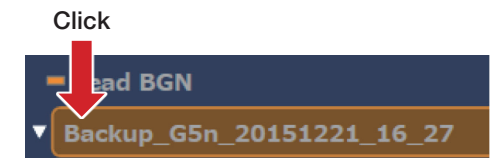


3. Select "Copy To Device Memory".

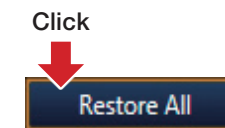


Restoring patch backups

1. Select the patch backup to restore.



2. Click "Restore All".



HINT

Select multiple patches to restore by holding down the Ctrl key as you click them.

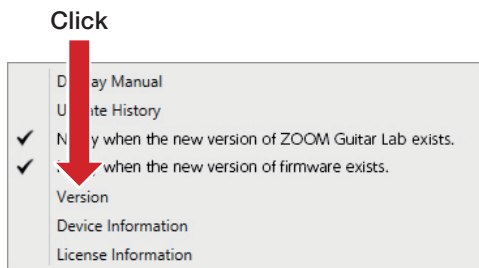
Managing versions

Showing the application version

1. Click "Help".



2. Select "Version".

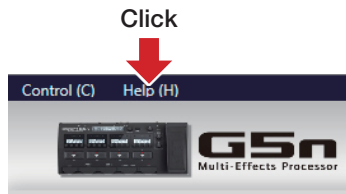


3. Check the version.

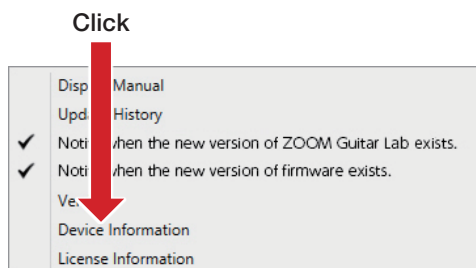


Showing the device version

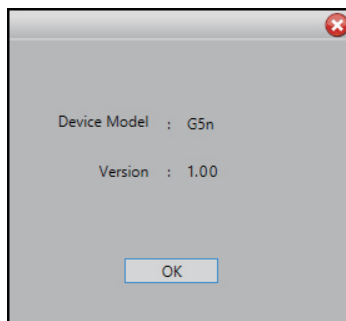
1. Click "Help".



2. Select "Device Information".

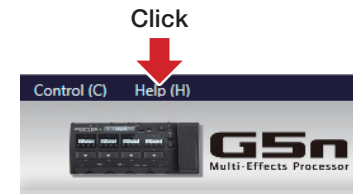


3. Check the device version.

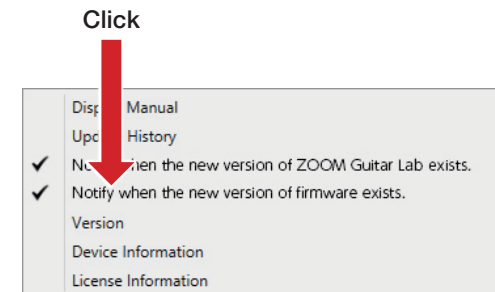


Setting version update notifications

1. Click "Help".



2. Select "Notify when the new version of ZOOM Guitar Lab exists", and/or "Notify when the new version of firmware exists".



HINT

These are activated when a check appears next to them.

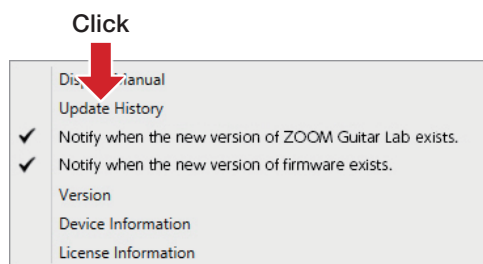
Managing versions

Showing the update history

1. Click "Help".



2. Select "Update History".



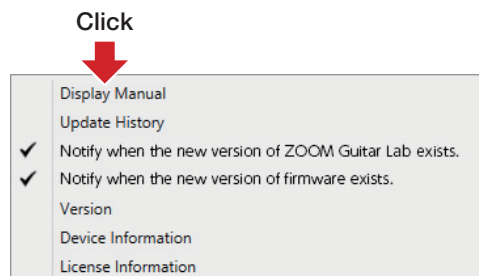
Showing the manual / Showing license information

Showing the manual

1. Click "Help".

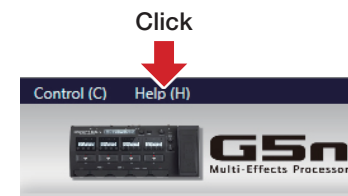


2. Select "Display Manual".

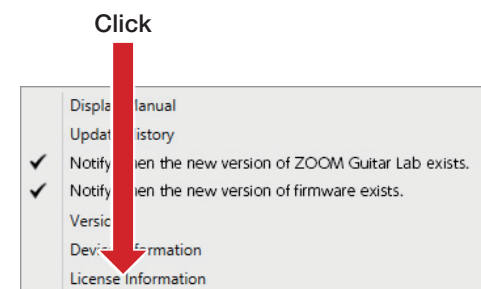


Showing license information

1. Click "Help".



2. Select "License Information".



• Windows® is a registered trademark of Microsoft® Corporation.

• Mac® is a registered trademark of Apple Inc.

Note: All trademarks and registered trademarks in this document are for identification purposes only and are not intended to infringe on the copyrights of their respective owners.

zoom®

ZOOM CORPORATION

4-4-3 Kanda-Surugadai, Chiyoda-ku, Tokyo 101-0062 Japan <http://www.zoom.co.jp>

Z2I-2592-01