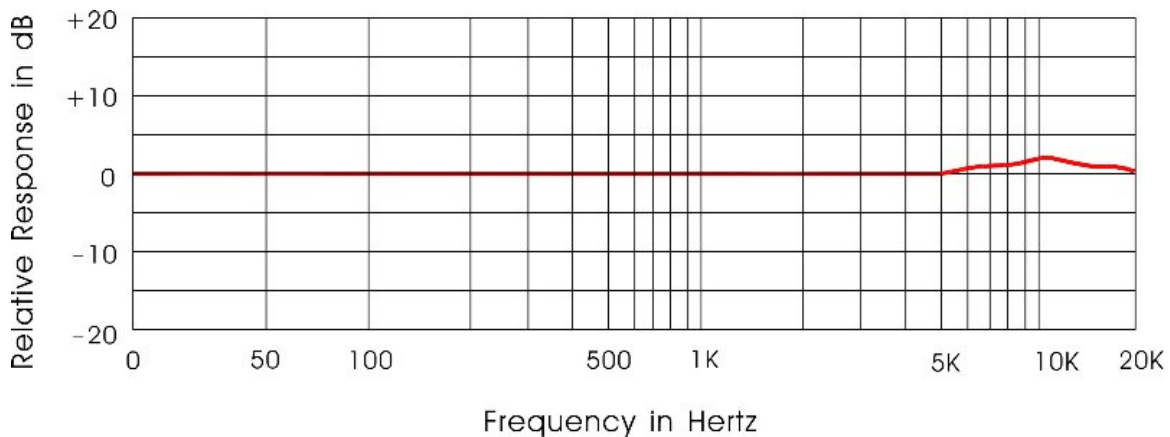
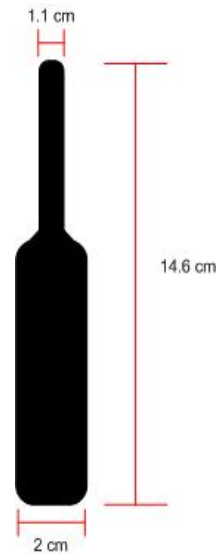


## dbx RTA-M



The RTA-M is an omni-directional, flat frequency measurement microphone specially designed for the Driverack series to pick up all frequencies from 20 Hz to 20 kHz , ensuring accurate "pinking"/real-time analysis of your audio. It runs on phantom power (supplied by the Driverack units) and comes with a clip and case.

### Features:

Polar Pattern : omni-directional

Element : back electret-Condenser

Frequency Response : 20 Hz - 20 kHz

Impedance : 250 +/-30% (at 1,000Hz)

Sensitivity : -63 dB +3 dB ( 0 dB=1V/ microbar 1,000 Hz indicated by open circuit )

Operating Voltage : phantom power 9V-52VDC

